

FAST AND FABULOUS CARIBBEAN GETAWAYS

**JIM MCGREEVEY:
JERSEY'S INCREDIBLE
SHRINKING GOVERNOR
BY JASON FAGONE**

Philadelphia

www.phillymag.com

SCHOOL

A SURVIVAL GUIDE

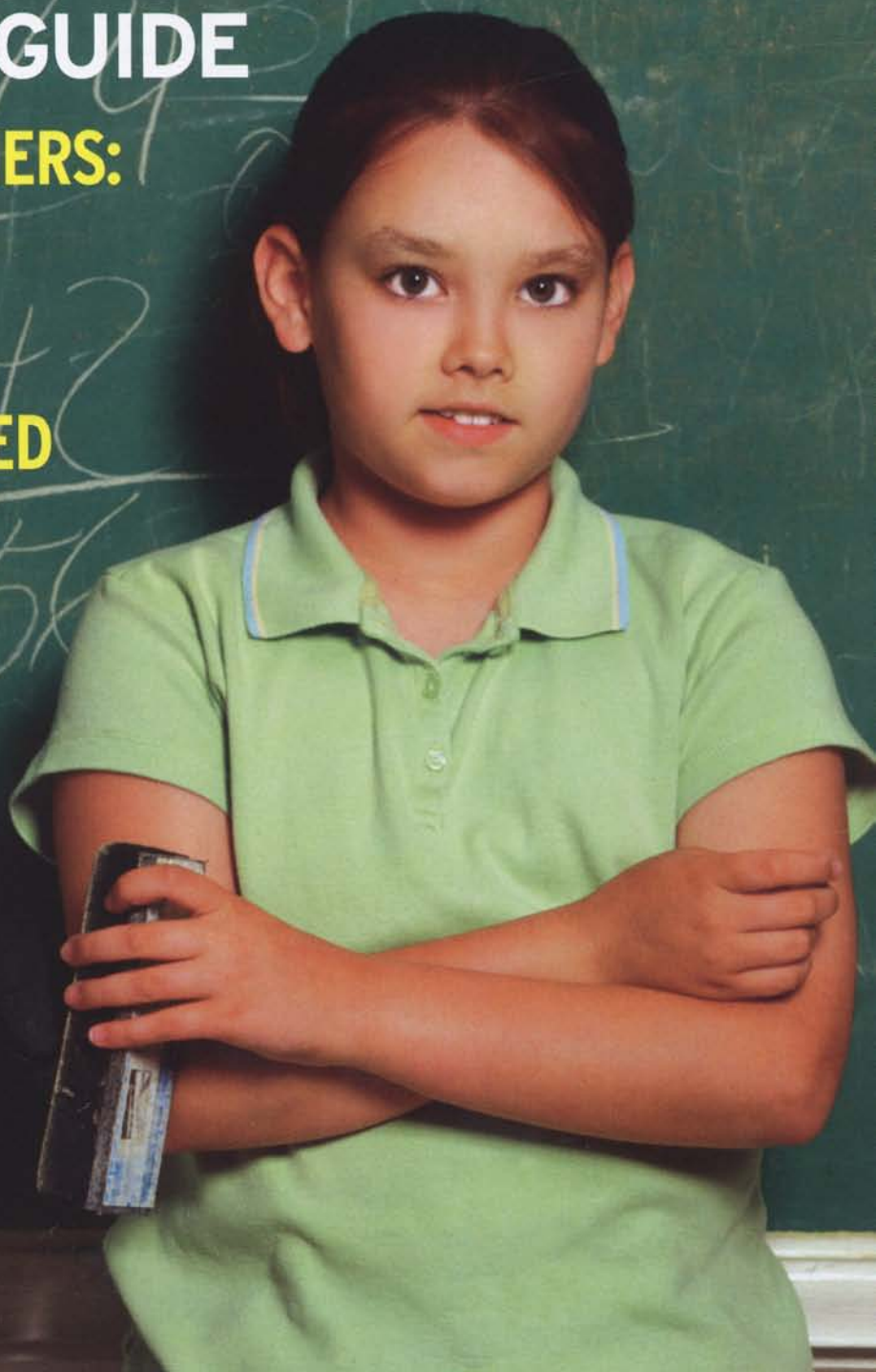
**PARENTS VS. TEACHERS:
HOW THE WAR IS
HURTING OUR KIDS**

**12 WAYS TO HELP
YOUR CHILD SUCCEED**

**THE AREA'S TOP
SPECIAL-NEEDS
SCHOOLS**

MY ADVICE FOR KOBE
BY KATO KAEIN
(YES, *THAT* KATO KAEIN)

GREAT LOCAL WINES
BY MARNIE OLD



SEPT 2003 \$3.50

09>

12294

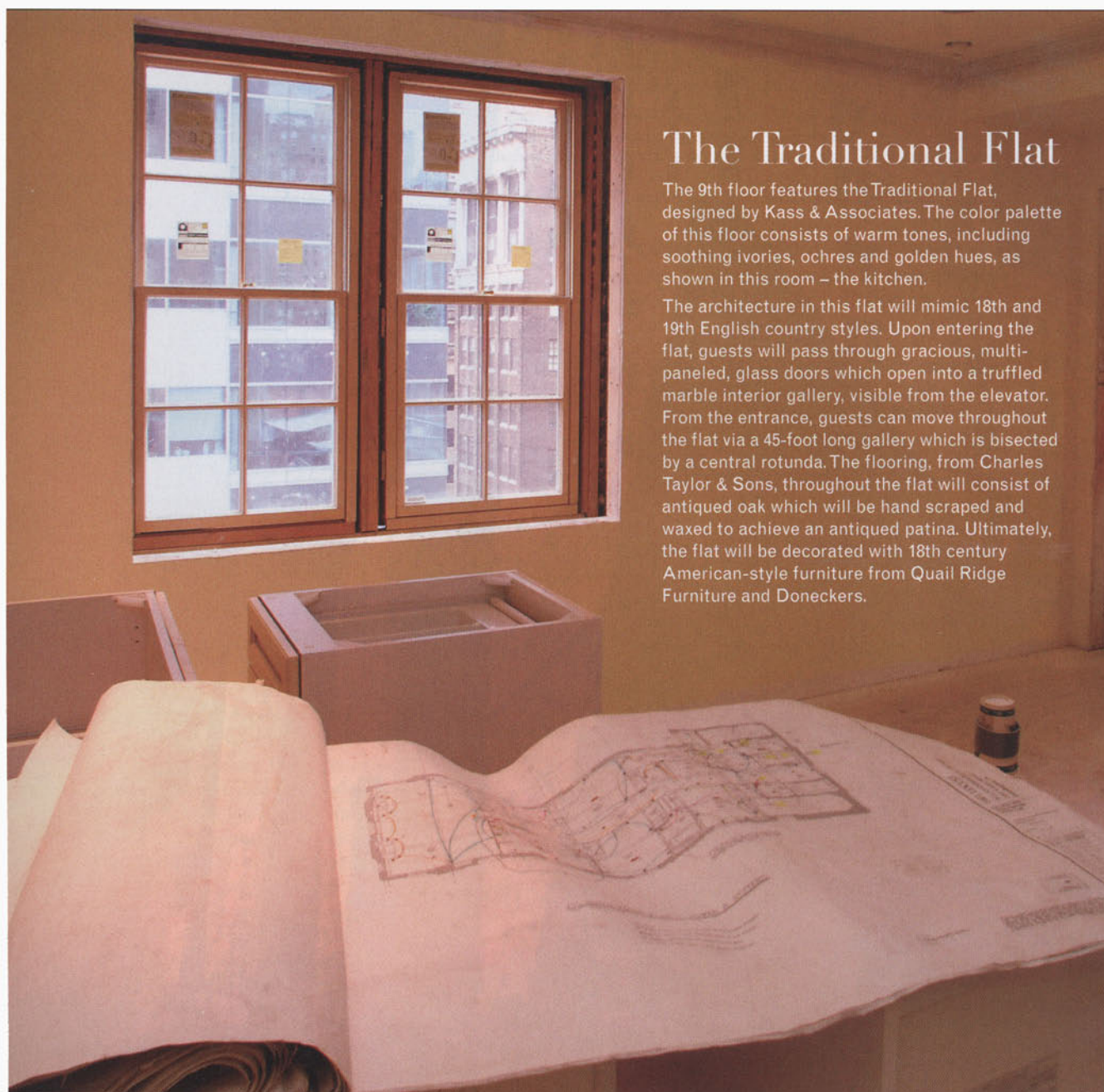
0 741316 2

Philadelphia Magazine's
DESIGN
HOME 2003™
CITY LIVING

Welcome back to the Lanesborough, an Allan Domb Real Estate project.
 In July, we unveiled the start of this exciting project located at 1601 Locust Street.

Since then, the flats have been wired by HiFi House for a multi room stereo, a home theater utilizing plasma television technology, voice/data transmission, television distribution and computer networking. Rooms and spaces have been defined by Fastrack Construction with the installation of drywall and new Pella™ Architect Series windows enhance the already scenic views from all four exposures. Week by week, the flats are starting to take on distinctive characteristics. They are no longer 3,500 square foot spaces; instead they are two distinct, intricately designed flats, one in a contemporary style and the other traditional.

Tune into FOX 29 Good Day Philadelphia, Thursday mornings starting at 6:30A.M.,
 for updates on the production of Design Home 2003- City Living.



The Traditional Flat

The 9th floor features the Traditional Flat, designed by Kass & Associates. The color palette of this floor consists of warm tones, including soothing ivories, ochres and golden hues, as shown in this room – the kitchen.

The architecture in this flat will mimic 18th and 19th English country styles. Upon entering the flat, guests will pass through gracious, multi-paneled, glass doors which open into a truffled marble interior gallery, visible from the elevator. From the entrance, guests can move throughout the flat via a 45-foot long gallery which is bisected by a central rotunda. The flooring, from Charles Taylor & Sons, throughout the flat will consist of antiqued oak which will be hand scraped and waxed to achieve an antiqued patina. Ultimately, the flat will be decorated with 18th century American-style furniture from Quail Ridge Furniture and Doneckers.



Pella™ windows and Joanne Hudson cabinetry await installation in the contemporary flat.

The Contemporary Flat

The 8th floor of the Lanesborough, designed by Cecil Baker & Associates, will feature a modern design and furnishings including pieces from Ligne Roset and Material Culture. The architecture within this residence is characterized by broad horizons and vistas punctuated by varying ceiling heights which capture natural light from all four exposures. Eventually, diagonally-set cherry-stained, maple flooring will add great energy to the rectilinear nature of the wall placements. The flat will reflect a cool palette and will consist of grays, creams and celadon hues. Soon, the flat will be decorated and furnished with a range of contemporary lines and textures, woods and metals and fabric and leather.



Work is in full-swing as door and window trim are measured and cut, spackle is applied and wiring is completed.



Fastrack Construction workers install dentil molding in the living room and dining room of the traditional flat.

Design Details – The Traditional Flat

Typically found in 18th century architecture and design, dentil molding is characterized by rectangular, tooth-like blocks spaced at equal intervals along a cornice molding. The traditional flat features over 6,000 linear feet of millwork throughout the residence.